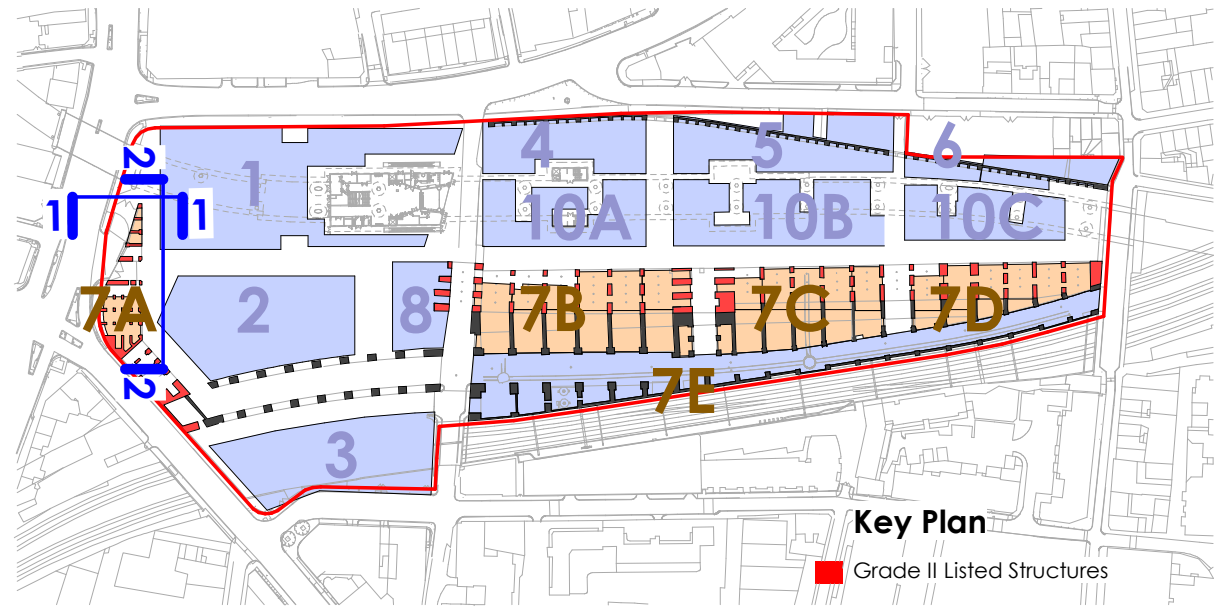


EXISTING BIRD'S EYE VIEW FROM SOUTH EAST - Southern and Western Arches (highlighted yellow) are to be removed leaving the Oriel Gateway as a stand alone building.



EXISTING EASTERN SIDE TO ORIEL GATEWAY - Partially collapsed lid & brickwork from previous demolition. Brickwork is irregular and unfinished. Fill material above arches lacks any retaining element to ensure stability of the remaining arches.



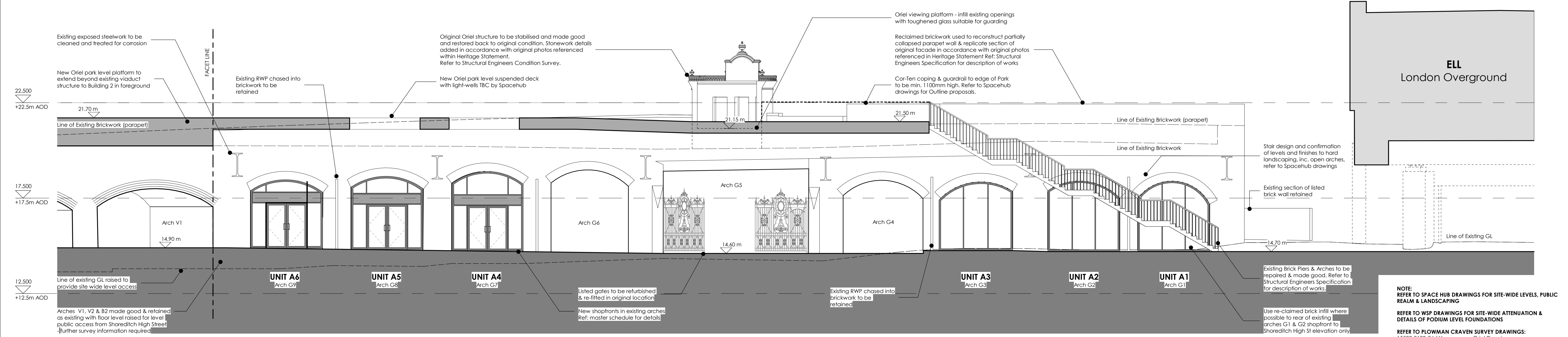
EXISTING NORTH EAST CORNER - Partially collapsed remnants of former arches from previous demolition for the London Overground. Fill material above arches lacks any retaining element to ensure stability of the remaining arches.



1

Plot 7A61 - Proposed North Elevation

1 : 100



2

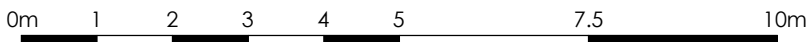
Plot 7A61 - Proposed East Elevation

1 : 100

KEY


- AREA OUTSIDE SCOPE OF APPLICATION

REFER TO STRUCTURAL, M&E & LANDSCAPE CONSULTANT PROPOSALS FOR DETAILS
- PROPOSED GOODYARD PLOTS OUTSIDE SCOPE OF PLOT 7 LBA



Do not scale this drawing
Do not derive dimensions from digital media

Rev	Date	Drawn By	Checked By	Rev	Date	Revision Notes	Drawn By	Checked By	Rev	Date	Revision Notes	Drawn By	Checked By	Rev	Date	Revision Notes

Drawing Status:	PLANNING FOR APPROVAL			Suitability:	-	Drawing No:	BGY-FBA-00-XX-DR-A-00_10-7A61		Rev:	P1
Job Title:	The Goodyard			Job No:	3465	© Drawing & Design Copyright of: FAULKNERBROWNS ARCHITECTS  <div>FaulknerBrowns LLP Dorson House Northumbrian Way Killingworth Newcastle upon Tyne NE12 6DW T+44(0)191 2683007 F+44(0)191 2478132</div>				
Drawing Title:	Plot 7A - Proposed Elevations Sheet 1									
Date:	April 19	Scale:	As indicated	Drawn By:	SO					